



Patients  
Health Care  
Hospital  
Physician  
Clinical Research  
Service Providers

# IS EHR4CR SOLVING A REAL NEED? THE KAROLINSKA EXPECTATIONS

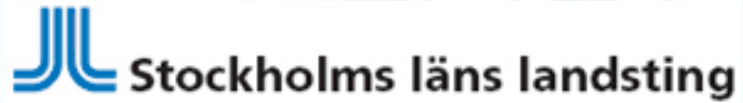
Harriet Udd,  
Karolinska Trial Alliance



# Organisation



Patients  
Health Care  
Hospital

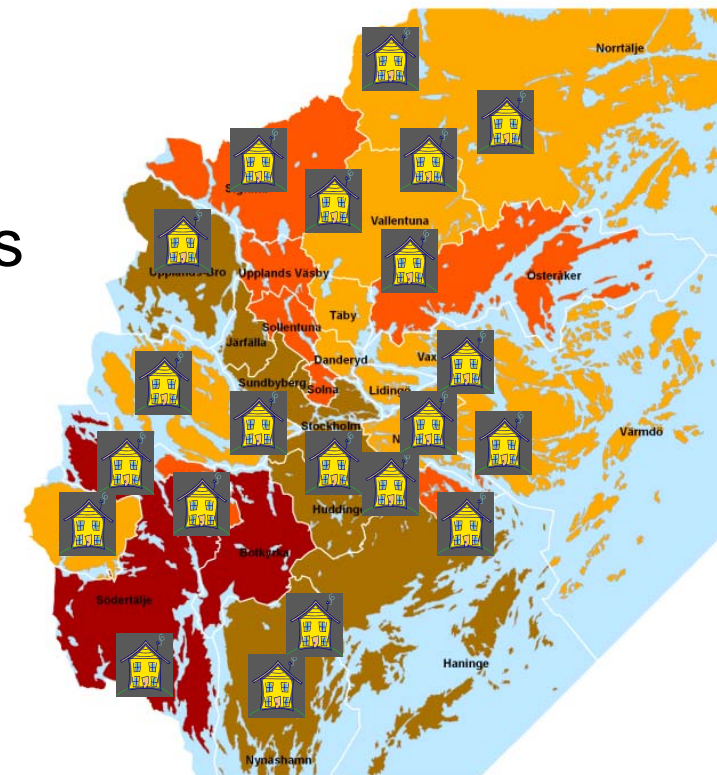


*Electronic Health Records for Clinical Research*

# Patient Recruitment



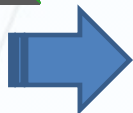
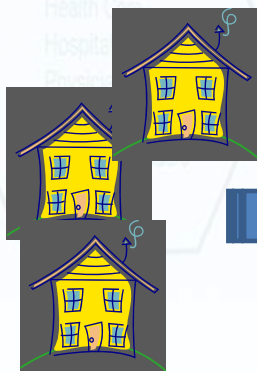
- 2 million residents
- > 300 primary care units
- ~60% use the same e-health records





# Feasibility system

Primary care



De-identified data

- Diagnosis
- Lab
- Prescribed medicine
- Examinations

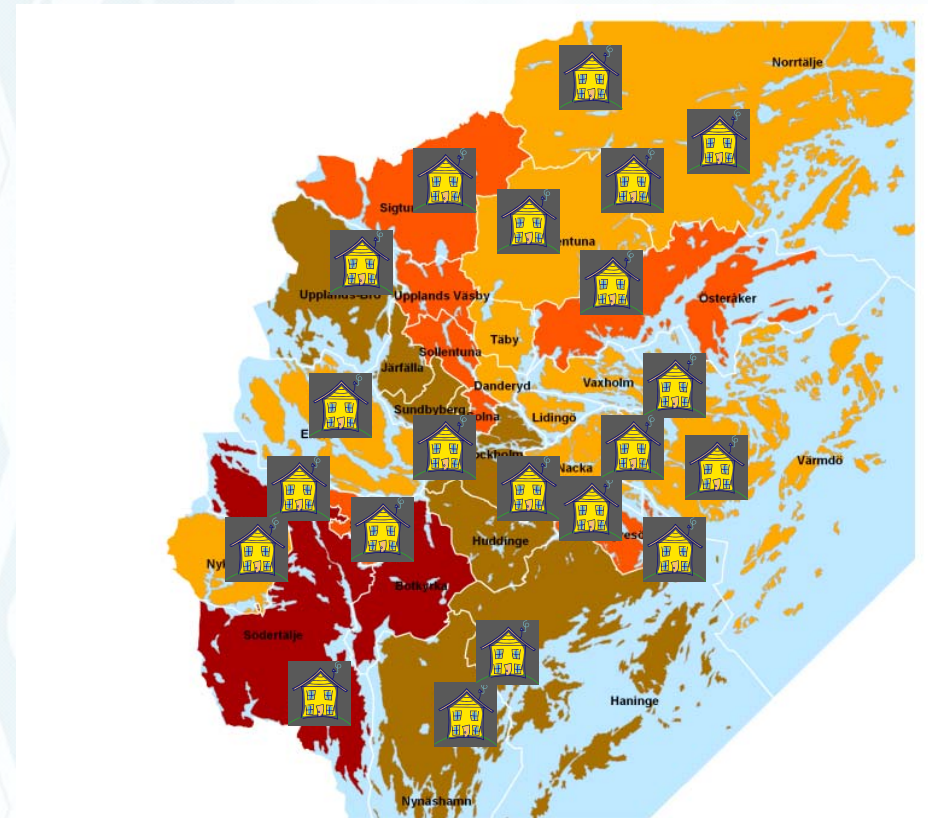
Is this an optimized clinical protocol design?

Does the patient exist?

Where can we find the patient?

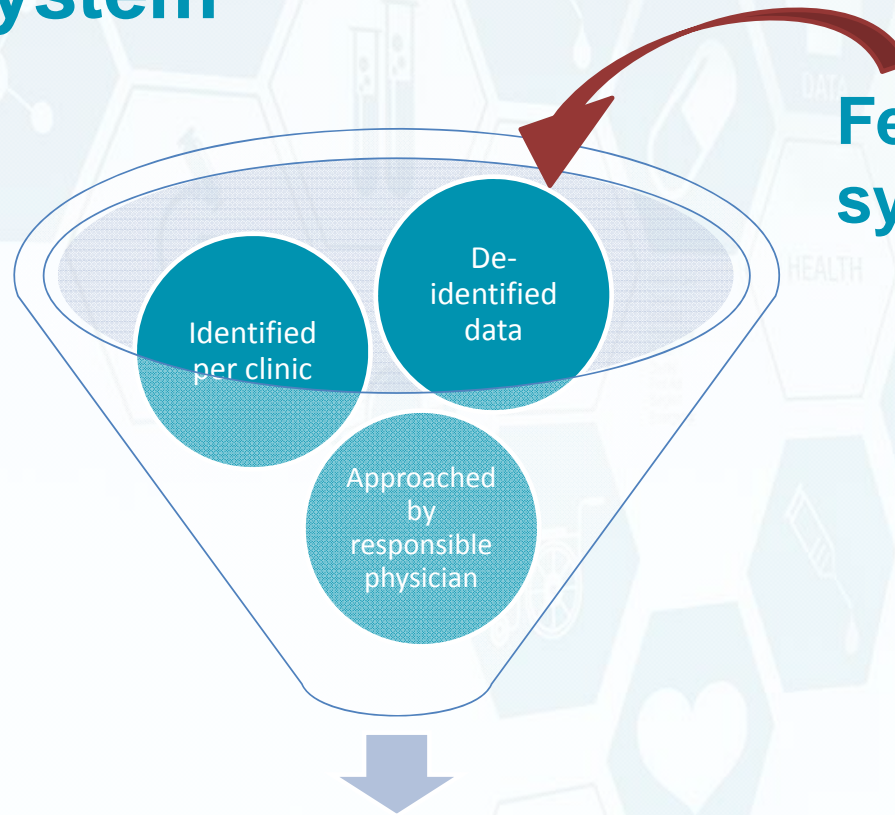
# Feasibility system

- Diabetes type II
- Metformin treatment
- Hba1c > 7%



# Feasibility system

# Feasibility system

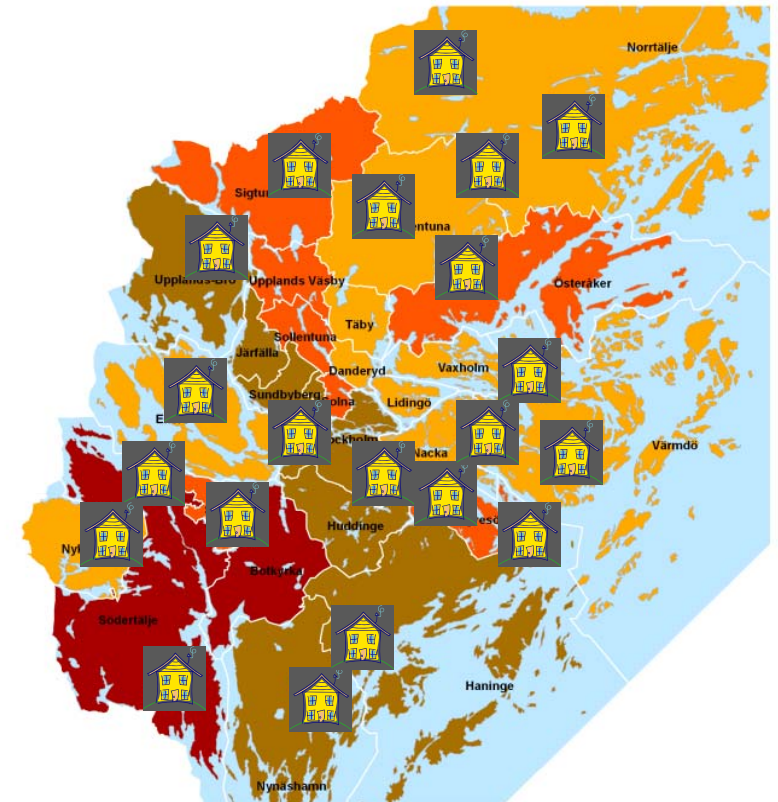


Subject responding



# Recruiting network

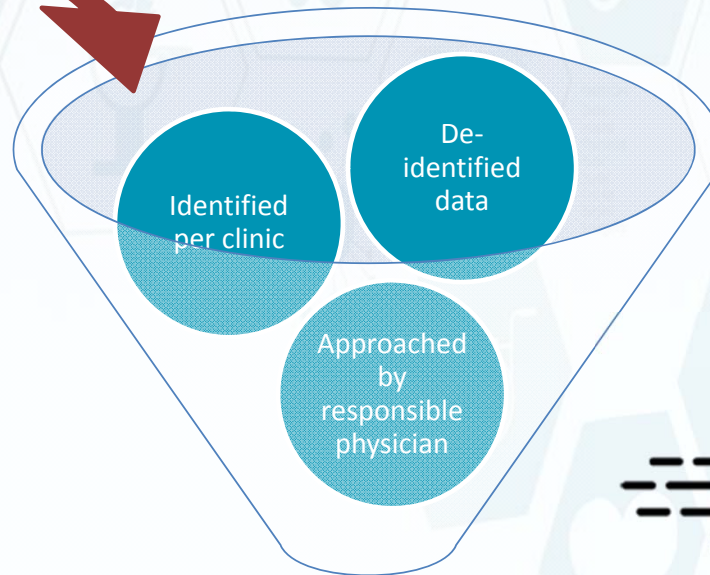
- Agreement with 40 Primary care units
- Mix of private and public
- Use **medrave4**



# Recruiting network

Recruiting  
network

Feasibility  
system



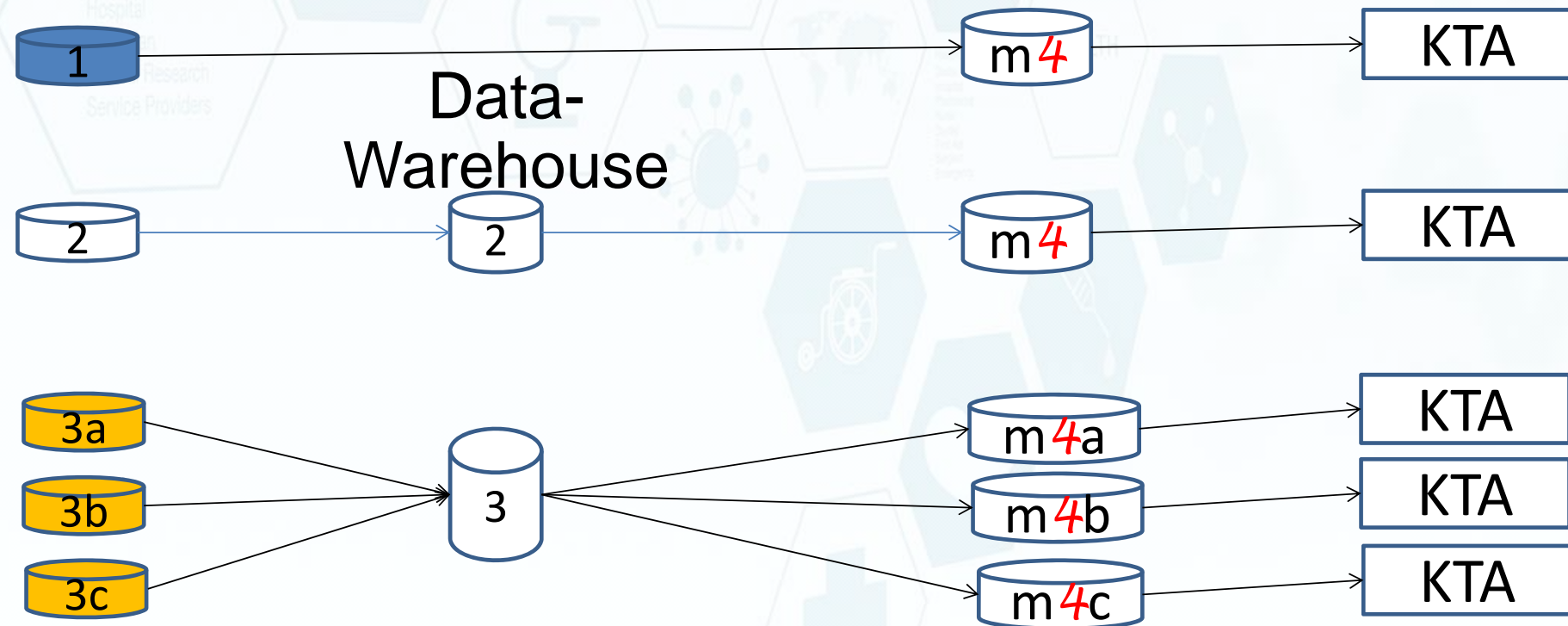
Interested subjects



# Recruiting network

EHR

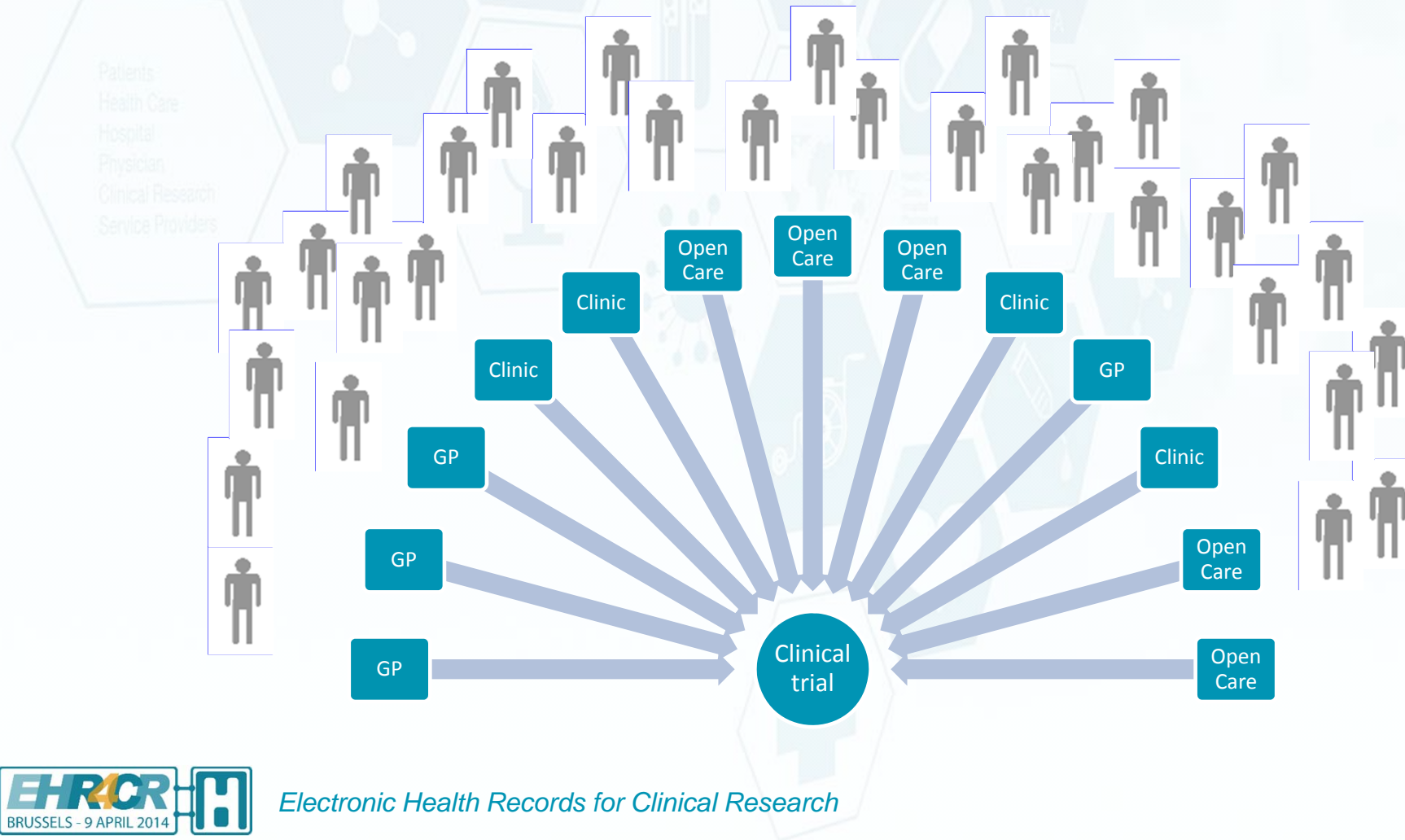
Medrave db



Patients  
Health Care  
Hospital  
Physician  
Clinical Research  
Service Providers

# Why?

# Traditional approach





# Open Care Trial Site



Companies/Investigators



Trial site 



Research nurses  
Coordinating

Clinical trial

**KTA  
Prim**

Trial team  
Large patient  
groups



Open Care SLL



Electronic Health Records for Clinical Research

## Why?

- Clinical research without competing with routine care
- Capacity to include many patients
- Easier access, handling and control for sponsor at a lower cost
  
- Increase the interest for clinical research
- Make the Stockholm region more attractive

# Is EHR4CR solving a real need?

